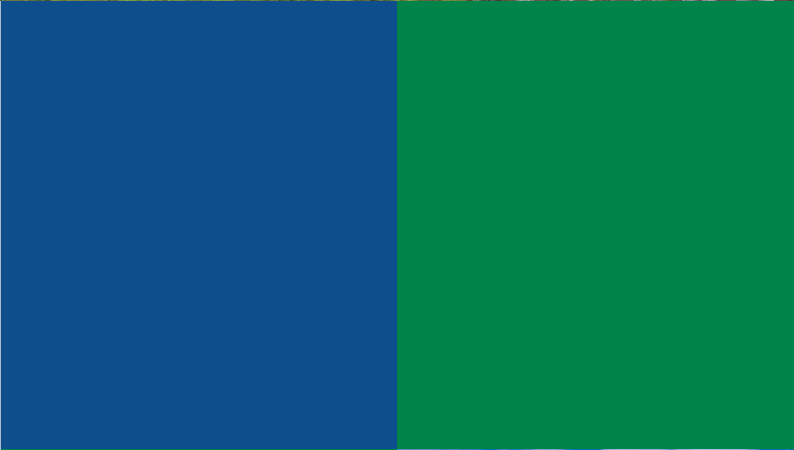
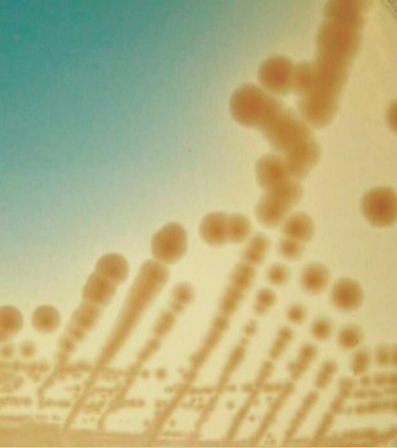


Graduate School of Agriculture Kyoto University

Special Course in Agricultural Sciences

– For the Global Future of Life, Food and the Environment –



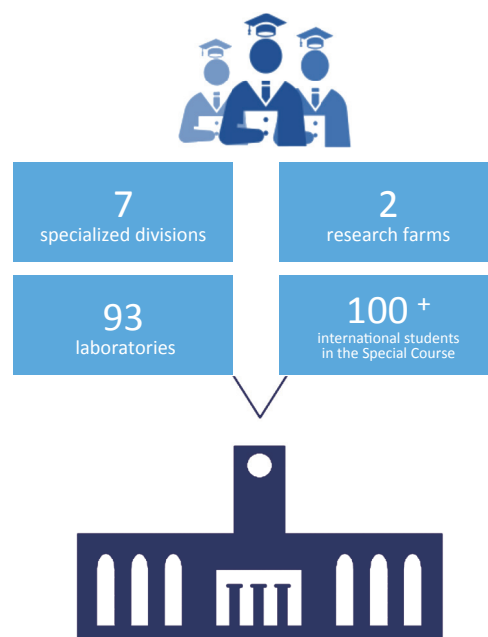
AGRICULTURE
KYOTO U

Special Course in Agricultural Sciences

- For the Global Future of Life, Food and the Environment

The Graduate School of Agriculture, Kyoto University offers an international education program, “Special Course in Agricultural Sciences - For the Global Future of Life, Food and the Environment”, since April 2010, under the umbrella program “K.U.PROFILE” (Kyoto University Program for Future International Leaders). This course aims to develop human resources with advanced research abilities, profound knowledge and an international perspective in the fields of life, food and the environment, who can be an international leader in the future.

Both master’s and doctoral course students are accepted. As lectures and research guidance are given in English, students need not study Japanese language to obtain their degree. Students of this course can join one of the following divisions covering a diverse range of agricultural, life and environmental sciences: Agronomy and Horticultural Science, Forest and Biomaterials Science, Applied Life Sciences, Applied Biosciences, Environmental Science and Technology, Natural Resource Economics, and Food Science and Biotechnology. Each student will have the benefit of having several supervisors for their research guidance.



Welcome from the Dean



Professor TAO Ryutaro

The Faculty of Agriculture at Kyoto University was established in 1923, and subsequently, in 1953, the Graduate School of Agriculture at Kyoto University was founded and stands as one of the oldest and largest graduate school of its kind in Japan. Over a century since its foundation, Kyoto University’s Faculty/Graduate School of Agriculture has nurtured numerous talented individuals and spearheaded world-class research achievements across various fields, making significant contributions to the advancement of agricultural science.

The Graduate School of Agriculture focuses on the keywords "Life, Food, and Environment" addressing complex and challenging issues facing humanity. These include the sustainable continuity of life across generations, ensuring the security and high quality of food, and addressing environmental degradation and the restoration of deteriorated environments. The Graduate School of Agriculture consists of seven division and conducts a wide range of research and education, from molecular and cellular-level life activities to Earth's ecosystems, material cycling systems, and even human activities in local communities. This encompasses a broad spectrum of studies aimed at improving the productivity of agriculture, forestry, fishery, and livestock industries, while preserving production environments. Cutting-edge research outcomes from the Graduate School of Agriculture are regularly featured on the Kyoto University's and the Graduate School of Agriculture's websites.

For humanity to thrive and continue a prosperous life, it is essential that high-quality food is abundantly supplied. However, it cannot be overlooked that advancements in production technology have placed significant burdens on the environment, resulting in constrains on food production due to issues like soil salinity and erosion. In recent years, the emission of greenhouse gases with agricultural production has also become a significant issue. Overcoming the challenges humanity faces is imperative for the continued enjoyment of prosperous life. The role that agricultural science must play is undeniably substantial. Through a diverse range of education and research, we aspire to contribute to the peaceful lives of people worldwide.

In addition to the agricultural sciences, Kyoto University convers diverse academic fields, attracting students from all over the world. You will have numerous opportunities to engage in exchanges with them on campus, aiding in the development of your international network of contacts.

We look forward to welcoming you in Kyoto, one of the oldest historical cities in Japan. We assure you that traditional “OMOTENASHI” atmosphere of Japan will create unforgettable memories of your campus life.

● Curriculum ●



The minimum required period of enrollment in the programs is two years for the master's course and three years for the doctoral course. Master's course students must obtain 30 credits or more in their major to pass the master's thesis screening and final examination for their degree. Doctoral students are required to pass the dissertation assessment and final examination.



List of subjects offered in English at Graduate School of Agriculture

as of April 2024

| Division | Title |
|--------------------------------------|---|
| Agronomy and Horticultural Science | Crop Production Ecology, Topics in Advanced Plant Breeding, Vegetable and Ornamental Horticulture (Advanced Course), Fruit Tree Physiology, Weed Science (Advanced Course), Food Quality Design and Development (Advanced Course), Quality Analysis and Assessment |
| Forest and Biomaterials Science | Forest Resources and Society, Tropical Forest Environments, Forest Ecology, Forest Utilization, Control of Natural Hazards in Watersheds, Theory of Erosion Control, Special Lecture on Forest Hydrology, Fibrous Biomaterials, Sciences for Innovative Humano-habitability |
| Applied Life Sciences | Applied Microbiology for Human Life, Advanced Applied Biochemistry, Applied Plant Sciences |
| Applied Biosciences | Advanced Genetics I, Advanced Genetics II, Fisheries and Environmental Oceanography II, Current Topics in Marine Microbiology, Function of Marine Organisms |
| Environmental Science and Technology | Tropical Agricultural Ecology, Agroecology of Tropical Crops, Soil Science, Biogeochemistry, Special Lecture on Ecological Information, Special Lecture on Ecological Management, Agricultural Facilities Engineering, Numerical Science of Structural Design, Water Resources Engineering, Hydraulic and Environmental Modeling, Hydrological Environment Sciences, Rural Land Use Planning, Rural Community Planning, Agricultural Systems Engineering, Bioresource and Bioenergy, Field Robotics (Advanced Course), Field Automation, Bio-Sensing Engineering (Advanced Course), Physicality of Agricultural Products, Environmental Radiation Control, Engineering of Environmental Radiation Control |
| Natural Resource Economics | Regional Environmental Economics, Agricultural and Environmental Policy, Forest and Resources Economics, Development Microeconomics, International Agri-food Studies, Qualitative Research Methods and Analysis, Qualitative Research Methods, Microeconomic Analysis, Econometric Analysis, Applied Microeconomic Analysis, Applied Econometric Analysis, Special Lecture on Natural Resources Economics |
| Food Science and Biotechnology | Advanced Course of Enzyme Chemistry, Advanced Course of Protein Engineering, Advanced Course of Food Chemistry, Advanced Course of Health Science, Advanced Course of Bioengineering |
| All Division | Agriculture and Environment in Japan, Special Lecture on Comparative Agricultural Studies, Special Lecture on global issues in agricultural science, Scientific Communication, Sustainable Agriculture: A Cross-Cultural Perspective, Human Security and Global Environmental Change, Southeast Asian Studies, UNESCO Chair Fieldwork : Water, Forest and Society |

※ Besides the subjects listed above, seminars and laboratory works are available in English.



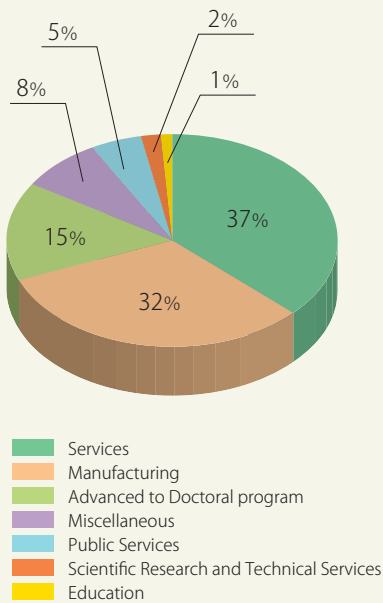
● Admission Schedule ●

| | April Enrollment | October Enrollment |
|---------------------------------------|---|--------------------|
| Admission Guidelines | Available on our website | |
| Application Period | Early August | Early February |
| Announcement of Successful Applicants | Middle of September | Middle of March |
| Enrollment Capacity | A few for both Master's and Doctoral programs | |

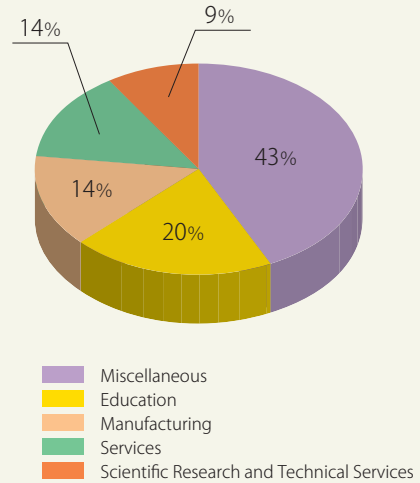


Career Paths after Graduation Graduate School of Agriculture (GSA) Graduates, AY 2022

Graduates of the Master's Program



Graduates of the Doctoral Program



Contact Information

Graduate School of Agriculture, Kyoto University

Kitashirakawa Oiwake-cho, Sakyo-ku,
Kyoto-shi, Kyoto 606-8502 JAPAN
TEL: +81 75 753 6014
FAX: +81 75 753 6005
Email: agri-kyoumu2@mail2.adm.kyoto-u.ac.jp
agrig30@mail2.adm.kyoto-u.ac.jp



GSA on Facebook

Websites Graduate School of Agriculture: <http://www.kais.kyoto-u.ac.jp/english/>

Location of Kyoto



Osaka Kansai International Airport

Limited Express
"Haruka"
Approx. 75min

Limousine Bus
Approx. 88min

Shuttle Taxi Service
Approx. 120min

Kyoto Station

Kyoto Station
Bus Terminal

Kyoto City Bus
Route #17
Approx. 30min

* Get off at "Kyodai
Nogakubu Mae"

Graduate School of Agriculture,
Kyoto University